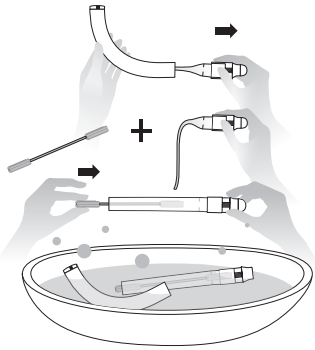
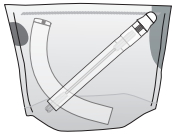


## QUICK START GUIDE Cleaning

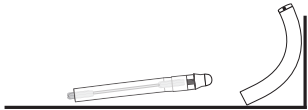
I



II



III

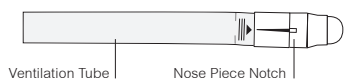


## QUICK START GUIDE Assembly

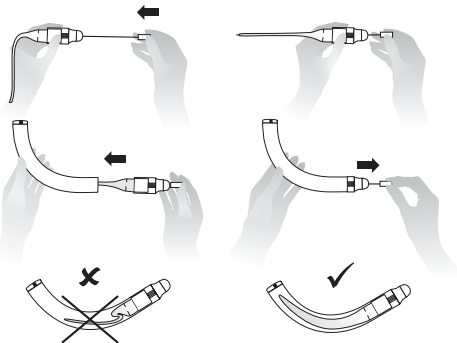
I



II



III



## INSTRUCTIONS cleaning

### I Cleaning / Disinfection

To clean pull the nosepiece with the ventilation tube out of the curved tube and insert the drying spatula into the tube. This eases the disinfection and the subsequent drying. All pieces can be cleaned or boiled out in a steam sterilizer.

A clinical reprocessing treatment can follow in autoclave at temperatures of 121°C or 134°C. Clean the device at least twice weekly with regular use.

### II Further cleaning possibilities:

#### RC-Clean Cleaning Bag

Disassemble the RC-Corner® N as described in Section I. Place all parts in the cleaning bag. Further instructions can be found on the RC-Clean cleaning bag. (See accessories)

### III Drying

When drying the RC-Corner® N, the drying spatula is designed to hold the valve tube open, thus ensuring air movement within the valve tube aiding the effective drying process.

## ASSEMBLY DIRECTIONS

I In the case that the ventilation tube was pulled off of the nosepiece push this back onto the nose piece up to the four longish ridges. In order to insert the nosepiece with the ventilation tube in the curved tube, please use the insertion aid provided.

II Please ensure that the notch of the nosepiece is perpendicular to the wide side of the tube.

III The tube must not lay compressed in the curved tube. That is why the insertion device should always be used when inserting the nosepiece into the curved tube.

**Important:** Remove the insertion aid following each re-assembly.

All pieces should be stored out of the reach of children.

## ACCESSORIES AND ADDITIONAL PRODUCTS

### RC-Corner® N valve hoses natural rubbers

Double pack

Article-no. 211EN

PPN 110 875 621 700



### RC-Clean

Cleaning bag for the microwave

Easy and quick cleaning of medical products as well as baby items.

Use only for microwave safe products.

Article-no. 500EN

PPN 111 075 103 265 / PIP 393-6424



### RC-Pflege® N

Nose and Throat Spray

Protects and cares for nose and throat.

Article-no. 250EN



Accessories and additional products are available in pharmacies, medical supply stores or at:

[www.cegla-shop.com](http://www.cegla-shop.com)

All pieces are available separately.

The nasal corner is meant for use by a single patient. For clinical reuse instructions for multiple patients, visit [www.cegla.de](http://www.cegla.de)

Further information: [www.cegla.de](http://www.cegla.de)

Article-no. 220EN

PPN 110 886 232 700

PIP 393-4809

03/2017



LATEX FREE



NON STERILE



QUANTITY: 1



NO DEHP



DO NOT USE IF DAMAGED



CONSULT INSTRUCTIONS



CE



REF 220EN

**CEGLA**  
MEDICAL TECHNOLOGY

Manufacturer:

R. Cegla GmbH & Co. KG

Horresser Berg 1

56410 Montabaur

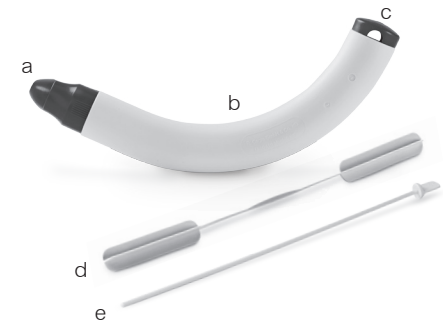
Germany

[www.cegla.de](http://www.cegla.de)



## RC-CORNER® N (Nasal Cornet)

Physiotherapeutic device for treatment of the upper airways



Please read through the usage directions carefully before the first use.

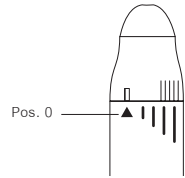
This RC-Corner®N package contains:

- Nosepiece with nose olive and ventilation tube
- Curved tube
- Silencer
- Drying spatula
- Insertion aid

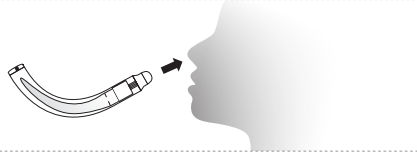
**CEGLA**  
MEDICAL TECHNOLOGY

## QUICK START GUIDE

I



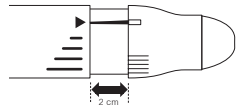
II



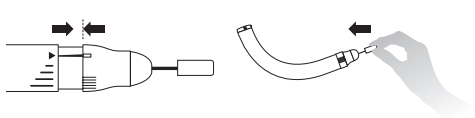
III



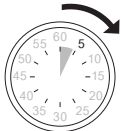
IV



V



VI



VII



## APPLICATION DESCRIPTION

I Select the out-position, Pos. 0, with the nasal cornet by adjusting the nosepiece so that the notch of the nosepiece is lined up with the short arrow of the tube.

II Insert the RC-Cornet® N into the left nostril and hold the right nostril closed with your pointer finger.

III Breathe in through the mouth and blow the air slowly out through your nose and the RC-Cornet® N. This generates a positive pressure in the nose and throat area as well as creates vibrations and a dull tone. Breathe out completely through the RC-Cornet® N. Repeat the process with the right nostril.

IV Should breathing out be difficult for you or your child, then you may pull the nosepiece 2 cm out of the curved tube. The tube will begin to vibrate with 5 cm H<sub>2</sub>O.

V When you push the nosepiece with the ventilation tube back into the curved tube, please always use the insertion aid for this.

VI Recommended application frequency is 3 x daily for 1-2 minutes per nostril as well as always when a mucus obstruction is felt. As with every physical therapy the RC-Cornet® N only works with regular usage.

VII We recommend before using the RC-Cornet® N to put a salt solution (½ teaspoon table salt in a glass of water) or the RC-Pflege® N. Empirically this allows for a quicker and more pronounced therapeutic effect. The nasal douche should not be carried out with nasal entrance inflammations and/or injuries inside the nostrils.

## INTENDED USE

The RC-Cornet® N is a device for the physical therapy of chronic sinusitis, postnasal-drip-syndrome and nose spray addiction (pruvinismus). The therapy with the RC-Cornet® N provides on a natural basis for a clear nose and sinuses.

### Effectiveness:

- Frees and cleans the upper respiratory tract from mucus
- Alleviates coughing with postnasal-drip-syndrome
- Decreases bronchial hyperactivity
- Improves the ventilation of the sinuses and the middle ear
- Optimizes the dispersion of medicine

### Physiological effects:

The RC-Cornet® N causes through vibrations in the nose and throat a loosening, liquefaction and dissolution of the mucus. Through physical stimuli it comes to a normalization of the mucus membrane, whereby depending on the duration and severity of the previous dysfunctions different time period lengths are necessary.

### Negative Effects:

There are no negative effects known from treatment with the nasal cornet. Upon beginning the treatment, however, a temporary head cold can occur, which represents a regulatory phenomenon.

### Contraindication:

The RC-Cornet® N should not, or only after consultation with an attending doctor, be used when the following illnesses are present:

- Untreated pneumothorax
- Surgical operations or injuries in/on mouth, face, skull or esophagus
- Repeated, massive nose bleeding
- Acute nose-sinus or middle ear inflammations usage should only follow with concurrent administering of antibiotics and after consultation with a doctor

## NOTES

The use of the RC-Cornet® N is independent of gravity. You can use the device therefore lying down, sitting or standing.

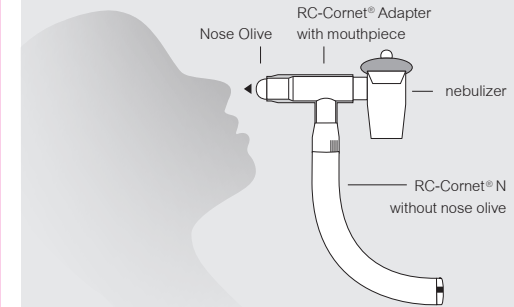
Minor whitish condensation on the tube or in the curved tube originates from medical talcum during the tube production and is harmless.

The ventilation tube of the RC-Cornet® N is made of natural rubber. It is recommended to replace the tube every 6 months.

## EVEN MORE EFFECTIVE:

### Combined Therapy

The combination of the RC-Cornet® N therapy with an inhalation therapy by means of a nebulizer (humidity inhaler) improves the medication disposition, reduces the entire length of therapy and increases the effectiveness of both therapies.



The RC-Cornet® Adapter combines the nasal cornet with all common nebulizers.

Pull the nose olive out of the nasal cornet. Put this in the RC-Cornet® Adapter and subsequently the converted adapter on the nose cornet. Connect now the nebulizer with the RC-Cornet® Adapter.

Article-no. 225EN  
PPN 110 141 313 578  
www.cegla.de

